



*Santa's Coming To
Hardwick!*

4.30 - 7.30pm

Saturday 11th December

Santa will drive his special sleigh around the village to visit you at your house, where his Elf helpers will give you a gift.

Book your visit now!

Book by 1st December!

Email hardwickpreschoolfundraising@gmail.com to book your visit! A route will be sent a few days before so you can track him on his travels! Hardwick village only
Fundraising for Hardwick Pre-school (Charity Number 1059361)

Scan. Pay. Go.

VILLAGE DATABASE

Cambridgeshire County Council: www.cambridgeshire.gov.uk 01223 717111

Community Association: Anne Jones jeffandanne23@gmail.com 01954 211417

Community Car Scheme: Nicky Kerr 07464 052 521 Gillian

Stott 07464 069 483 Cheryl Phillips 07908 023 836

Lizzie Coe 07387 395 296

Community Primary School:

Headteacher: Mr James Hoban and Ms Cate Thompson 01954 210070

www.hardwickandcambourne.primary.co.uk

Caretaker Alison Berkeley aberkeley@live.co.uk 07523879335

Community Speed Watch: Alan Everitt csw.hardwick@gmail.com 07739322905

Community warden Age uk Paula Rowley 07812495997

County Councillor:

Doctors' Surgeries:

Surgery/Dispensary 58 Green End, Comberton 01223 262500/262399

Bourn Surgery 25 Alms Hill, Bourn 01954 719313

Child & Family Nurses: 01954 282830

District Councillor: Grenville Chamberlain grenville_c@hotmail.com 01954 210040

Hardwick Evangelical church

hechurch.co.uk

Minister: Rev Kate Gaze minister.hechurch@gmail.com 01954 211900/212556

Secretary: Enid Instone-Brewer hardwickevangalical@gmail.com

General:

Community Education Office: CVC 01223 264721

Ashcroft Veterinary Surgery: 169 St Neots Rd 01954 210250

Cambridge Water Co (supply): 01223 403000

Anglian Water (sewerage): 08457 145145

Eastern Electricity: 0800 7 838 838

Gas Emergency: 0800 111 999

Guides: Janet Hayman hardwickguides@gmail.com

Rainbows: Jane Muncey 1hardwickrainbows@gmail.com 01954 210570

Guiding information [www. Girlguiding.org.uk](http://www.Girlguiding.org.uk)

Hardwick Happenings Peter Cornwell Howard Baker

hardwickhappenings@gmail.com

Hardwick Happenings On-line Archivist Ackbar Joolia ackbar@ackadij.com

Hardwick Network Ruth Enge (Coord) Hardwick.Network@gmail.com 07814 358181.

Hardwick pre school: hardwick.preschool@yahoo.co.uk 01954 212823

Hardwick Climate Action Group Shaun Hughes smhughes@gmail.com

Member of Parliament: Anthony Browne
Netball Club: Alison Beresford
Neighbourhood Watch: Ashley Shepherd ahshepherd@hotmail.co.uk
Parish Council:
 Parish Clerk: Gail Stoehr clerk@hardwick-cambs.org.uk 01954 210241
 Chairman: Tony Gill a.gill@hardwick-cambs.org.uk 01954 211108
 Vice chairman: Pauline Joslin p.joslin@hardwick-cambs.org.uk 01954 212395

 Reporting highways /road problems 03450 455212
 Reporting light problems (South Cambs) 03450 450063
 All other street lamp faults 08007 838247

St. Mary's Parish Church: 01954 212815
 Clare Bigg Cebigg53@gmail.com 01954 211673

Sports and Social Club:
 www.hardwicksportsandsocialclub.co.uk hsscsecretary@mail.com
 01954 210110 Lindsey Haynes ginge1964@yahoo.co.uk
 07925 208108

Three fifteen club:
 Sharon Turner hardwick3.15club@hotmail.co.uk 07787 910490

Village webmaster Ackbar Joolia ackbar@ackadij.com
W.I.: Carolyn Purser cangpurser@btinternet.com 01954 210904

BIN COLLECTIONS

Date	Colour
Wednesday November 3 rd	Green & Blue
Wednesday November 10 th	Black
Wednesday November 17 th	Green & Blue
Wednesday November 24 th	Black
Wednesday December 1 st	Green & Blue
Wednesday December 8 th	Black
Wednesday December 15 th	Green & Blue
Wednesday December 22 nd	Black
Friday December 31st	Blue only

Hardwick Happenings

November 2021

Issue number 369

Printed by Victoire Press and delivered free to every Hardwick household, independent, but affiliated to the Community Association with financial support from the Parish Council. Print run 1200.

Face book: Hardwick Happenings

Twitter: @hardwickhap

The Hardwick Happenings Team

Editors: Peter Cornwell and Howard Baker

Reporter: Daniel Baker

Advertising: Peter Huen (peterhuen.hh@gmail.com)

Treasurer: Jeff Jones

Distribution: Marian Gibbens, Yvonne Sawyer

Village calendar: Anne Jones

Proof reader: Sue Cornwell

On-line archivist: Ackbar Joolia

HH archive <https://www.hardwick-cambs.org.uk/hardwick-happenings-archive/>

Co-ordinators for the Caldecote Dry Drayton and Hardwick Car Scheme are as follows:

Nicky Kerr	07464 052 521
Gillian Stott	07464 069 483
Cheryl Phillips	07908 023 836
Lizzie Coe	07387 395 296
For queries/emergencies/problems only –	
Sheila Stephenson	01954 210638

hardwickhappenings@gmail.com

Advertising: peterhuen.hh@gmail.com

CONTENTS

Advertising prices	69
All need trees	16
Autumn photo	23
Bass singer wanted	54
Cambridgeshire PPF	50
Car scheme	29
Colour wheel	12
Comberton library	13
Community centre	62
Cycling out and about	10
Decisions	48
Evangelical church	55
From Liz Tinkler	35
From St Mary's	38
Guides	63
Harvest festival photos	20
National service	32
Parish Council newsbites	52
Pippins	25
The Cabin-a plea.	26
Scrubs update	7
Village diary	36
Village organisations	70
Walk for health	59
WI	15
Wildlife trust	30

Est. 1986

Signwork.co.uk

01954 211611

Design, Manufacture & Installation
Vehicle Graphics, Signs & Lettering

For all your sign requirements

dave@signwork.co.uk



Simple Solutions 
(Cambridgeshire) Limited

Accounting & Administration for the small business

Small business? Find record keeping a chore? Not really sure what you should be doing?

Let us help – we can take the whole job off your hands or give you the training to complete it yourself –

Accountancy, Bookkeeping, Payroll, VAT, CIS, 1-1 Training

Whatever you need we have the Solution!

For a free consultation contact 01767 677562
or admin@simplesolutionscambs.co.uk

EDITORIAL

Community

The new page on decisions prompted no responses. Disappointing because I thought it was an excellent idea. There's a new question to think about on P 48. Possibly easier to answer this month, though the question of dress makes it more interesting. There was no response to the October cover quoting speeds of 60mph in Main St. Perhaps some don't care, but hundreds do. Here is a chance to alter attitudes, perhaps towards those who do the roadside recording?



We are still relying on a small group of contributors., So what is the magazine about? For me it is all about celebrating community, we have a great community in Hardwick and HH aims to shout about that and where possible to draw people out of their own little bubbles to engage with others.

Sharon McMahon's walking group is celebrated on P.59, what a brilliant idea. Community in action. Opposite, Clare Diston writes an update about the Scrubs for Cambridgeshire, what stars they are, doing such terrific work. They need our support with donations of towels, curtains, bed linen etc and they have a 'Just Giving' page if you can spare a few pounds. Here's community in action. The article should be required reading for everyone.

With Remembrance coming up soon, Howard has taken an interesting angle, writing about his National Service. Thanks Howard, a great article.

The deadline for the December/January edition is the 15th of November. It's not long, so how about putting pen to paper?

Peter

UPDATE FROM SfC (Scrubs for Cambridgeshire)

Although we are rarely sending out sets of scrubs now, the group is still extremely active, continuing to help those at home and abroad who need our assistance. Many of our sewers have returned to work and aren't able to sew as much, or at all, for us any longer. We have lots of different projects on the go at the moment, and would really welcome more sewers and cutter-outers to join us.

Please call me on 01954

210072, message me on Facebook or email me at Clare@Diston.me.uk to find out more.



We recently had a request from Addenbrooke's dialysis dept. for 450 tote bags with handles and adjustable shoulder strap in navy blue. We're awaiting their response to the prototype we've sent before starting work in earnest.

The bereavement bags, that we've been supplying to Addenbrookes and the Arthur Rank hospice since early in the pandemic, are on -going, and will be for the foreseeable future. We've had feedback from several people who have been given one of these bags on the death of a loved one, saying how grateful they were not to be given a black plastic bag containing their loved ones possessions.

Drain bags for the Breast care unit are another ongoing request from Addenbrookes. Users have said how grateful they are to have a choice of colourful bags available at such a difficult time.

Hundreds of face masks have been donated to Jimmy's Night Shelter and Emmaus, plus a large consignment are ready to be sent to Bali hospital in Indonesia, at the request of an ex-pat living there who reports that things are going very badly.

One member of the group has been working on a prototype for renewable sanitary towels, which are destined for Jimmy's, Emmaus, food banks and numerous other groups in need, here and abroad. These are an environmentally-friendly and economical resource for women & girls to use; one set of towels can last for years, unlike conventional products.

If you have any surplus towels of any size or colour, or towelling fabric, we would be very grateful to receive it! Please ensure it is washed at 60°C before dropping off, and include a note in the bag confirming this.

Our newest project is linking up with the Lisa Kent Trust to provide clothing for African children. The Trust, as I'm sure you're aware, already collects children's clothing and footwear, as well as books, toys and games suitable for use in their schools and adults & children's bikes.

We have just started making dresses out of pillowcases and other donated fabric, and will also make shorts and other items of clothing as requested.



The Trust has also asked for our help in collecting rucksacks, backpacks and pencil cases to send to their schools. If you have any of these that you would like to donate, either new or pre-loved (I stress, must be as new condition, please!), they can be dropped off at my house; 19 Worcester Ave, Hardwick, CB23 7XG at any time. Please leave your details for an acknowledgement.

Members of the group are a crafty bunch, and many have already responded to the plea from the East Anglian Children's Hospice(EACH) at Milton to donate crafts for their Christmas stall. I shared this request on Facebook recently and received several promises of donations from villagers. We have a few more weeks to go, so if you have any hand-made items that you would like to donate to EACH, please drop them off to me, and I will ensure they get to where they need to be!

The group had a stall at the recent Cambridge Club music festival at Childerley. Lots of you came by to say hello, and there were many words of appreciation from medical & care staff for donated scrubs – which is the reason we exist! You will have seen the selection of goods that we have for sale. Unfortunately, only a fraction of our handbags are visible on our website shop – there are many more items available. If anyone with a flair for photography is reading this, we could really do with some voluntary help taking pictures of our wares, and uploading them to our website. This might particularly suit a student who needs experience.



We are still accepting donations of bedlinen, but only in darker shades please, except for white polycotton sheets which can be used as a lining. As before, please make sure all donations are washed at 60°C, and labelled accordingly.

We are, once again, appealing for thin leather for bag handles. Leather from old jackets or trousers is ideal. Please get in touch if you're able to help!

Our tote and hand bags have proved to be very popular. We are particularly keen to receive velvet or "luxury-look" fabric in good condition. Pre-loved curtains are ideal as long as the fabric is sound. Please wash at 40°C and label as such. We're also after curtain & upholstery fabric samples, so if you have any, or know someone who has some (A5 size or larger), please do let me know!

If you are unable to donate any items, but would like to help us, our justgiving page is still open <[justgiving.com /crowdfunding/gio-gomez-2](https://www.justgiving.com/crowdfunding/gio-gomez-2)> or you can drop an envelope through my letterbox. If you include your details we'll send you a receipt.

We have been granted our Childerley Hub offices rent-free for many months, for which we are incredibly grateful. We will, however, need to start paying rent from the New Year, so any donations towards this would be most gratefully appreciated. If your company is community-minded, perhaps you could ask your employer to sponsor us or help us out in some way?

The support we have had (and continue to receive) from the community has been phenomenal.

Thank you so much! Your words and messages of support mean such a lot!

Clare Diston, on behalf of all the members of SfC.

www.scrubsforcambridgeshire.org







**CYCLING
OUT AND ABOUT
WITH
BOB DAVEY**



HH time line

The 15th of the month* is always the deadline for the next edition , the magazine goes to the printers on the 19th and we aim to have it back in the village by the 26th so that it can be on doorsteps by the beginning of the next month.

It doesn't always work!

*Jan / Feb, Apr /May, June/July and Aug /Sept go together, the rest are separate months making eight issues a year.

Comberton Library

www.cambridgeshire.gov.uk/library

Tel: 0345 045 5225

Monday: 10.00 am – 1.00 pm

Wednesday: 10.00 am – 1.00 pm and 2.00 – 5.00 pm

Friday: 2.00 – 5.00 pm

Saturday: 10.00 am – 1.00 pm

The longer autumn and winter evenings make this an ideal time to read a novel or teach yourself a new skill. We have a wide selection of fiction and non-fiction available for you to browse at Comberton Library, and if we don't have the book you are looking for, it is very easy to reserve a title, which will be delivered to the library for you to collect. Reservations for adults are just 50p per item and free for children and young people with their own library card. If you are not already a library member, it is very easy to join, either in the library or online at www.cambridgeshire.gov.uk/library. Library membership is free and open to all.

Please note that we have now reverted to a three week loan period, with up to three renewals permitted. Overdue charges have been re-introduced for late returns, but only for adult loans – there are no late charges for children's books. It now costs only £1 to borrow a DVD or audiobook for 3 weeks. Free services are available if you are housebound or visually impaired. Do ask library staff for more information about our charges and concessions. We are delighted to announce that the Autumn programme for The Library Presents is available now with events in libraries and online scheduled until the end of December. The Library Presents brings quality arts activities into towns and villages across Cambridgeshire. The programme is run by Cambridgeshire County Council working in partnership with Babylon ARTS and is funded by Arts Council England. You can find out more by visiting www.cambridgeshire.gov.uk/arts, or ask the library staff for more information when you are next visiting.

As part of The Library Presents programme, Cambourne Library will be hosting a Ceramics Workshop for children aged 4-10 years on Saturday 4th December at 2.00 pm. Tickets are £3 per child, accompanying adults free. Spaces are limited, so early booking is advised. Tickets can be purchased online at www.library.live/the-library-presents or in person at Cambourne Library. The staff at Comberton Library can help if you need any further details about this event.

We look forward to seeing you at Comberton Library very soon.

Hardwick WI invites you to a
Christmas Coffee Morning

In aid of the Lisa Kent Trust

St Mary's Cabin, Hardwick

Wednesday 8th December 2021 from 10am – 12pm

Tea, coffee, mince pies and Christmas biscuits
cakes, preserves, Christmas goodies, raffle.

All money raised will go to the **Lisa Kent Trust** to educate children in The Gambia. <https://lisakenttrust.org/>



WI window at the Harvest Festival



Our first face to face meeting took place in September in the School Hall – it was lovely to see everyone and we had a few new faces to welcome too -let us hope they come back and join us. We took the opportunity to have a social gathering to make the most of the opportunity to bond with one another.

Our next speaker is Jason Middleton who is an expert on Pearls – we might have to dust down a few of our own. We are also raising money for Breast Cancer so our members have been asked to wear something visible “in pink” and all monetary donations will be most welcome.

The Harvest Festival took place in St Marys Church recently and some of our members kindly arranged a window display for us – picture opposite.

The dining out group have organised a meal or two for the next couple of months – one is a lunch and one is a supper to cater for all our different needs. These occasions are good fun and a variety of our members support these events. The Book Club continues to meet on a monthly basis and the Darts Team are gearing up for the season too.

Christmas is on the horizon – before that we have a Christmas Coffee Morning to raise much needed funds for the Lisa Kent Trust – a charity set up to meet children's educational needs in Gambia – West Africa. At this event we are also holding a WI Cake Stall and a raffle too so please come along and join us - more details elsewhere in this magazine.

The Christmas Tree Festival is also taking place in St. Mary's and members are planning to decorate a WI tree in the theme of Fairy Tales

More information can be found on our website
<https://hardwickwi.weebly.com/>

NAOMI ROY

We All Need Trees

Let us count the ways trees are vital to our environment by:

Providing much of the oxygen we all need to live

Enhancing biodiversity - the greater the number of species we live with, the more likely it is that more of our environment will survive climate changes

Each soaking up about one tonne of CO₂ over their 30-50 year life-time - while this won't save us from the full effects of climate change, it will reduce it ... every little bit helps

Providing a habitat for many invertebrates and also vertebrates, such as bats and birds

Retaining moisture - we live in the driest region of Britain with rainfall averages around 570 mm (22.44 in) per year, around half the national average

Providing shade in summer - Cambridgeshire is one of the worst counties in the UK for tree cover

Preventing soil erosion

Being of great biophilic benefit to us all (yes, I had to look it up as well... it means the human tendency to interact or be closely associated with other forms of life in nature)

Unfortunately the existing tree stock in Hardwick is very susceptible to climate change, as well as the associated pests and diseases that are likely to accompany it. Many species are already suffering from diseases such as ash dieback, and other trees such as sycamores are also struggling with virulent diseases. Sadly most of the existing trees in Hardwick will not be able to adapt to climate change and won't be alive in the medium to long-term future.

Fortunately Hardwick Climate Action Group has been awarded a grant

from AstraZeneca to plant 75 trees over the coming autumn/spring planting window and the Parish Council unanimously agreed on the 28th of September to allow the trees to be planted on Parish Council land. Various sites throughout the village have been selected to avoid play areas and to best replace existing trees that are already showing signs of stress (see the plan opposite). The siting of each tree will follow the PC's Tree Policy, such as 5 metres clearance over roads and 2.4 metres over formal footpaths, and respecting residents' boundaries. Most areas will be getting 3-6 new trees each and the majority (more than 50) are being planted in the spinney between Sudeley Grove and Ashmead Drive, as many of the trees there are already dying.

The selected species have been carefully chosen to adapt to our ever-changing climate and be resilient to climate change: Liquid Amber; Robinia Pseudoacacia; Quercus Ilex; Tila Cordata 'Greenspire'; Gleditsia Triacanthos 'Sunburst'; Pyrus Calleryana 'Chanticleer'. They will be staked and bagged to retain water, similar to the new trees on Madingley Road outside Churchill College and will be maintained for at least three years to maximise their survival to become long-term replacements for the existing tree stock.

This initiative is one of many by Hardwick Climate Action Group to improve Hardwick's resilience to the changing climate. We always welcome new members. If you'd like to join, want more information about the tree planting, or would like to help plant them, just send an email to

hardwickcag@gmail.com

Shaun Hughes

Hardwick Climate Action group

S E DAVEY PLASTERING CONTRACTOR

**All aspects of
plastering work
carried out.**

**Tel: 01954 210941
Mob: 07711541799**

**info
sedavey.plastering@
outlook.com**



Marquees for hire

**Traditional and
frame marquees
available**



Frame Marquee: 5M x 8M 16ft. x 26ft.



Main (M) Marquee: 6M x 9M 20ft. x 30ft.

Private hire £85

Good causes £40

To book marquees, for more information, and other enquires about please contact:
bcthmarquee@gmail.com or
phone 01954 210570

All booking subject to availability of marquees and volunteer teams for delivery, pitching and striking.
By using these marquees you will be supporting local Rainbow, Brownie, Guide and Senior Section Girlguiding units.



County (C) Marquee: 6M x 6M 20ft. x 20ft.

BCTH Marquees operates as a charity exempt from registration under the provisions of the Charities Regulations 1961, 51 1961 No. 1044



THE POPLARS

**BED AND BREAKFAST
LOCAL B&B EST. 2000**

**DOUBLE, TWIN AND
FAMILY ENSUITE ROOMS
SELF - SERVICE BREAKFAST BAR**

**ON SITE PARKING. DOGS WELCOME. OPEN 365 DAYS
COVID AWARENESS + PERSONAL SANITIZING PRODUCTS**

***Reduced Rates for Family/Friends visiting village residents**

Mrs Brenda Phillips

12 East Drive, Highfields Caldecote CB237NZ

thepoplars@onetel.com 01954 210396 / 07941 022742

Andrina B

the footcare specialist

Providing expert treatment in all aspects of foot healthcare in the comfort of your own home

Nail Cut • Callus • Athlete's Foot

Hard Skin • Corn Removal

Fungal Infections • Plantar Faciitis

In-Growing Toe Nail • Orthotics

Leg and Foot Massage

To book your appointment call Andrina on

07966 571 686

or email: andrinab@foot-care.co.uk

www.foot-care.co.uk

Andrina Baldock, Foot Health Practitioner, SAC Dip. FHPP FHPT
Register for Foot Health Practitioners Member



Dog Grooming Parlour

67 Histon Road

Cottenham

Cambridge

CB24 8UF

www.wagglebumz.co.uk

01954 252869

C & C BLINDS

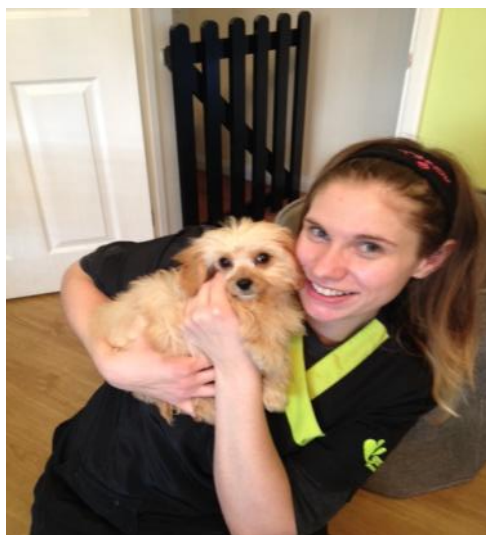
**SPECIALISTS IN ALL
TYPES OF
BLINDS**

ANY SIZE ANY COLOUR

**VERTICAL ROLLER
VENETIAN ROMAN
PLEATED**

**REPAIRS UNDERTAKEN
FREE ESTIMATES**

**Tel 01223 211171
Mobile 07761 262070**







Harvest festival Ceilidh at the Cabin Photos from Janet Hayman



Steamroller Ironing Services



Free pick-up and delivery
24/48 hr turnaround
Price: 1lb = £1.50. Minimum
= £15

Established for 16 years
Please call Susie on
07742 319631
01954 210672



Alpha Car Airport Transfers

Travel in comfort to and from London airports in 4, 6 and 8 seater luxury. Avoid the hassle of airport parking at prices you can afford. We regularly operate airport trips and also bespoke trips to London and all over the UK.

 01954 23 23 00  info@alphacarsonline.co.uk

 Alpha Cars, Longstanton, Cambridgeshire



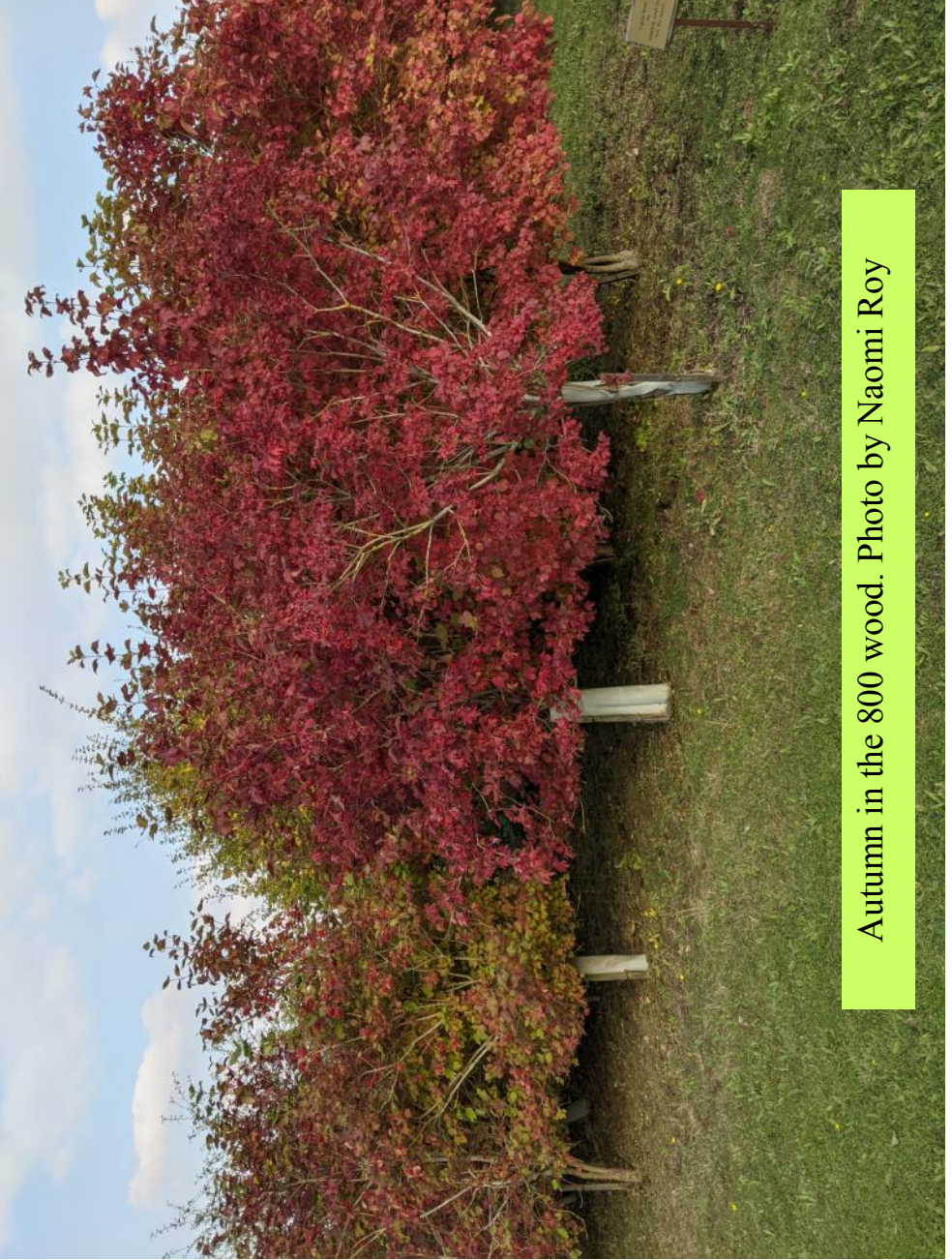
ARRINGTON GARDEN CENTRE

-  Fresh cut, rooted and potted 're-usable' trees available from late November
-  Top quality Nordmann Fir, Norway Spruce and Fraser Fir from certified British suppliers
-  From table-top to 'barn-conversion' extra large, all displayed under cover for weatherproof shopping
-  Wreaths, mistletoe, poinsettias and foliage
-  Garden tools and accessories - perfect Christmas presents for green fingered friends & family

Located directly off the A1198 near Arrington, SG8 0AG | Open 7 days a week | 01223 208194
www.arringtongardencentre.co.uk | manager@arringtongardencentre.com

ALL YOU NEED FOR YOUR GARDEN, THROUGH ALL THE SEASONS



Autumn in the 800 wood. Photo by Naomi Roy



The
Form
Practice

Open for Osteopathy during lockdown Pilates / Yoga one to one's / two's re-opening in April

Struggling with pain? Don't want to burden your Doctor in these difficult times? Osteopaths are Allied Health professionals with 4-5 years of training enabling them to accurately assess and diagnose the causes of pain in the body.

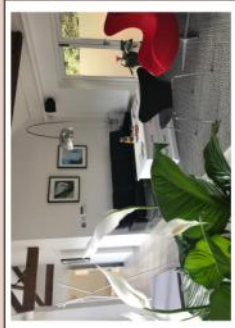
Come and see us at The Form Practice. We are a complementary health practice, hidden away in a peaceful setting in Hardwick. Located in a beautiful, renovated space.

Osteopathy can help with....

- ❖ Back and neck pain
- ❖ Joint pain
- ❖ Headaches
- ❖ Sports injuries
- ❖ Fibromyalgia
- ❖ Women's health
- ❖ Treatments for babies and children

NEW... we have a new class 4 Infra-red Laser which is proven to help repair skin, tendons, ligaments and muscles faster with less inflammation, scarring and pain.

Claire also specialises in women's health: gynaecology; pre and post-natal; and pelvic floor.



info@theformpractice.com, 01954 214473

www.theformpractice.com

Main Street, Hardwick, CB23 7QS



We were delighted to open Pippin's on October 2nd and based on the number of people who attended, it proved to be very welcome. We tried to be as safe as we possibly could with tables well-spaced out and staff wearing masks.

On November 6th we are planning on being open again but we have decided to use the main hall as it is a bigger area and hopefully will accommodate all our regulars. Please use the main entrance into the school and enter the hall via the fire exit door on the right-hand side. Please wear face masks until you are seated and sanitise your hands as you enter.

We hope to be open again on December 4th but will not be open on January 1st as it is a bank holiday but will be open on January 8th instead. So, make sure you have the dates in your diaries.

Looking forward to seeing you all on November 6th.

Pippin's Management Team



The Cabin at St Mary's – a plea to groups and individuals

At St Mary's Church we are very proud our new building, the Cabin. It is something which we've been working towards achieving for many years and it is now finally available for use by the whole community.

As many of you will know, the Cabin has been up and running for over a year but we have only recently fully completed it and paid the final invoice.

We have regular users of the Cabin including Pilates, Zumba, Brownies & Rainbows, the Parish Council, Colour Wheel, Bumps & Babies, Creative Arts Group, Craft Group, Book Club, Tuesday Morning Toddlers, Wild Church and WI. Also, we have one-off bookings including birthday parties, funeral wakes and social events for St Mary's Church.

So many people have commented on how much they enjoy using the facilities at such a quiet and tranquil site. The Cabin is very versatile and easily accessible.

Although the Cabin is now completed and paid for, there are still a few extras that would further enhance the facilities, for which we don't have sufficient funds. These include:

- the purchase of additional equipment to use the hearing loop in the hall
- more storage facilities for the outside furniture
- improved fencing around the pond
- completing the landscaping, improving the outside grassed area and other features to enhance the environment



- erecting a noticeboard to explain our plans for the sustainability, diversity and land management of the entire site, including the graveyard.

-

The shortfall in funds to carry these out is approximately £4000, so if you feel you would like to help us achieve these further improvements by making a donation, please go to our web page <https://stmaryshardwick.org.uk/>

Thanking you in anticipation.

The Cabin Management Team
Hospitality, Wholeness, Encounter





We not only print and supply corporate or personal stationery and business forms, we also provide branded items to promote your business or event.

A vibrant, multi-colored paint splash graphic is located in the lower-left quadrant of the advertisement. The splash consists of numerous vertical streaks and droplets in shades of red, orange, yellow, green, and blue, creating a dynamic and artistic effect.

Take a peek at
our website

www.victoirepress.com

for more information
or call us

01954 781919



info@victoirepress.com - www.victoirepress.com
1 Trafalgar Way, Bar Hill, Cambridge, CB23 8SQ
Follow us on Twitter @victoirepress - like us on facebook



Wildlife Trust West Cambridgeshire Hundreds Update:

Ash die-back is a fungal disease brought to the UK through imported trees and wind-blown spores from Europe. It received a lot of press a few years back so you may be forgiven for thinking the problem has been solved, but it is an ongoing and serious issue. Only ash trees are affected, but across the UK, ash makes up a large proportion of trees, and over the next few years most of these will succumb to the disease or secondary infections. Infected trees can be dangerous to fell due to the risk of falling branches, so it is good-practice to manage them before they become too damaged.

All the woodland reserves in the area, owned and managed by Wildlife Trust for Beds, Cambs and Northants, have a large percentage of ash. We continue to monitor the progress of ash dieback and carry out the appropriate management (felling, thinning or leaving to provide valuable dead-wood habitat). Some trees will require expensive work by specialist contractors to ensure they don't damage property or cause road accidents. We manage over 100 reserves so the cost of this work is tens of thousands of pounds.

Here are some things that could keep you safe with the increasing risk of falling branches:

- Please show caution when considering visiting woods during windy conditions

- Please respect signs on our reserves. We may close the whole site, or part of it, if there are trees at risk of falling, or we are felling

- Please only use official entrances where we can post information regarding closures. Using unofficial entrances can damage soil and plants, create disturbance to wildlife, and compromise your safety, and that of forestry workers

- Please report fallen trees blocking or hanging above a path, including a photo if possible. They may be passable but not safe.

- Find out more about ash die back on our website:

 - www.wildlifebcn.org/ash-dieback

The Wildlife Trust BCN rely on volunteers to increase the impact of our work. There are several different opportunities to help near Hardwick.

- some sites like Hardwick Wood have practical work parties over the autumn and winter

if you visit a specific reserve regularly, you could be our eyes and ears



and report back problems, or help solve simple issues
if you are a people person, you could help with community activities
you could save amphibian lives on the spring toad patrol near Bourn air-
field.

Please get in touch to find out more, or visit our website:
www.wildlifebcn.org/get-involved/volunteer

I'm Rebecca Neal and I work with communities surrounding our West
Cambs 100s reserves, delivering events and working with all ages.

E-mail: rebecca.neal@wildlifebcn.org

Facebook: @BeccaBadgerWTBCN

BCN Facebook/Twitter: @wildlifebcn

Visit: www.wildlifebcn.org

The West Cambridgeshire Hundreds are a group of nature reserves owned
and/or managed by the Wildlife Trust for Beds Cambs and Northants:
Hardwick, Gamlingay, Hayley, and Waresley and Gransden Woods, Buff
Wood plus Cambourne Nature Reserve.

MY SERVICE ON EASY STREET

We are coming round to that time of year again when we wear our poppies and remember the many service people who died in the wars which have been fought throughout the world. Millions of them lost their lives in two world wars, along with thousands of others in more recent conflicts, including those in Iraq and Afghanistan. There is also a medal for those who did National Service. I believe I am entitled to wear this.

On August 4th 1955, at the age of eighteen, I travelled from my home in the north east of England to RAF Cardington in Bedfordshire to begin my National Service. After a week of kitting out and learning how to march up and down the parade ground, we were loaded on to buses and driven to RAF Hednesford in Staffordshire. There we began eight weeks of basic training, at the end of which we were fully prepared to face the enemy, except that it was the army recruits who would be doing that. We 'Brylcreme boys' were more likely to be sitting behind desks, or wielding screwdrivers.

Young men of my age had grandfathers who had served in the First World War, and fathers who had fought in the Second, so National Service seemed a logical follow-on. It was necessary as well: we were fighting wars in Kenya, Malaya, Aden, Cyprus and Korea. One of my fellow recruits on basic training was posted to Aden immediately afterwards.

I was actively looking forward to mine. Before my call-up I had been doing a clerical job which was boring, and I saw National Service as my means of escape. Now it gradually began to dawn on me that instead of sitting at a desk in civvy street I'd be sitting at a desk in the RAF. I needed a means of escape from my means of escape.

This came near the end of basic training when we had a talk from an Education Officer who mentioned that there was a Russian Linguists course and they were looking for recruits. So I gave him my name and a few weeks later I was on the way to the Joint Services School for Linguists in Bodmin, Cornwall, five hundred and fifty miles from home.

We learnt Russian five hours a day, five days a week. Every six weeks there was a progress test. Anyone getting less than forty per cent in this test was removed from the course. Our numbers were steadily reduced but I clung on and finished the course. Then we were posted to a camp at Wythall, on the borders of Birmingham and Worcestershire, for a twelve week radio course.

The majority of RAF recruits had places at Oxford or Cambridge after National Service, and it was an education for me to mingle with them. I was taking 'A' Level English, and my fellow recruits were keen to discuss the set books with me and guide me with my essays. When I told them I hoped to go on to university they told me about Fitzwilliam House in Cambridge, which in those days took ninety per cent grammar school boys and a mere ten per cent of boys from public schools. They urged me to apply and I did.

Rumours began to circulate that at the end of the course we were going to be posted to Germany. A chance to go abroad at the RAF's expense. But it was not to be. Shortly before the draft to Germany I tore the ligaments in my left leg in a scratch game of football and was deemed 'unfit to sail.' By the time I was finished with x-rays and treatment I only had five months of my service left and was posted to RAR Digby in Lincolnshire where I finally put my knowledge of Russian and radio skills to good use.

RAF Digby was an amazing camp. Half the people working there were civilians so there was no militarism about the place, no parades, no drill sergeants barking orders. Then there was the food. RAF Digby regularly won the award for the best food in the service. At lunch there was usually a choice of six starters, ten main courses and six desserts. When the chef came round the tables to ask for comments he usually got ironic remarks such as, 'The caviar wasn't up to standard' or 'The champagne was a bit flat today, chef.'

'Easy Street' is a much used expression in the armed forces. It's the equivalent of The Big Rock Candy Mountain or Fiddlers Green, a place where everything is near perfect. RAF Digby was definitely Easy Street and I wouldn't dare to claim a medal for service there.

Another advantage was that the flight sergeant in charge of us linguists enjoyed giving weekend passes, and Digby was a lot closer to home

After my time at Digby I would almost have been willing to stay on.

Almost! I couldn't have stayed on anyway. There was a place waiting for me at Cambridge. Howard Baker



276444 Junior Technician Baker

A.H.

RE\$MEMBRANCE SERVICE

The remembrance service at St Mary's is at
10.50 am on the 14th of November. All we-
come.

After 18 months of 'lockdown' it was a privilege to be able to attend two exciting and well organised events in Hardwick village.

First the Eco event where Lisa Kent Trust were able to demonstrate our sustainability shipping furniture and goods to The Gambia which would otherwise be dumped in landfill. And in return we import fair trade bags produced by Gambian tailors to support their income.

Thanks to Peter Cornwell and his team for putting on this superb event.

The following weekend was the Hardwick Party superbly organised by Robbie Thomson and his volunteers. It was wonderful to see so many people out and enjoying a vast array of stalls, food vendors and music. Thank you to all the businesses and individuals who donated to the raffle, from which Lisa Kent Trust was one of the beneficiaries, we will put your monies to good use supporting the education of needy communities in The Gambia

Thank you all for your support of LKT at these events and we look forward to 2022.

Liz Tinkler
07803 123023

On behalf of Lisa Kent Trust
-Delivering Opportunities-

VILLAGE DIARY

Date	Event	Venue	Time
Nov			
4 th	Quiz	HSSC	7.45pm
5 th	'Walking for Health' walking group	Blue Lion	11am
5 th	Soul & Motown with Cecil Faraji - Tickets £5 for members, £6 for non members	HSSC	8pm
6 th	Pippin's	Hardwick School	10am - midday
9 th	Colour Wheel	Cabin at St Mary's	1pm - 3pm
12 th	Library Bus - route H12	Hardwick School St Neots Rd, Blue Lion Limes Rd, near school	10.40am-11.50am 2.15pm - 2.30pm 2.40pm - 2.55pm 3.05pm - 4pm
14 th	Remembrance Sunday	St Mary's Church	10.50am (TBC)
17 th	W.I.-Saori Seward -'The art of Japanese Furoshiki wrapping'	Hardwick School	7.30pm
19 th	'Walking for Health' walking group	Frankie's Café	11am
23 rd	Colour Wheel	Cabin at St Mary's	1pm - 3pm
23 rd	Parish Council meeting	Cabin at St Mary's	7pm
Dec			
2nd	Quiz	HSSC	7.45pm
3 rd	'Walking for Health' walking group	Blue Lion	11am
4 th	'G' comes with his singing comedy & vocal impressions -	HSSC	TBC

4 th	Pippin's		Hardwick School	10am - midday
7 th	Colour Wheel		Cabin at St Mary's	1pm - 3pm
8 th	Christmas coffee morning - organised by the WI to raise money for the Lisa Kent Trust		Cabin at St Mary's	10am - midday
10 th	Library Bus - route H12		As above	As above
10 th - 12 th	Christmas Tree Festival		St Mary's Church	See separate poster enclosed
11 th	Santa visits Hardwick (organised by Pre-School)		Around the village	4.30pm - 8pm
14 th	Parish Council meeting		Cabin at St Mary's	7pm
15 th	W.I. - Christmas Social		Hardwick School	7.30pm
17 th	'Walking for Health' walking group		Frankie's Café	11am
19 th	Christmas Carol Service		St Mary's Church	4pm
21 st	Colour Wheel		Cabin at St Mary's	1pm - 3pm
21 st	Christingle/Fun afternoon - TBC		St Mary's Church	
Jan				
4 th	Colour Wheel			
5 th	South Cambridgeshire Outdoor Christmas Market		Cambourne	12pm - 6pm
6 th	Quiz		HSSC	7.45pm
7 th	'Walking for Health' walking group		Blue Lion	11am
8 th	Pippin's - please note change of date		Hardwick School	10am - midday
11 th	Parish Council meeting		Cabin at St Mary's	7pm
14 th	Library Bus - route H12		As above	As above

St Mary's Church Community

St Mary's Church, Hardwick is part of the Lordsbridge
Team of Churches & the Diocese of Ely



www.stmaryshardwick.org.uk

Interim lead minister: Clare Bigg, Tel: 01954 211673; email: ce-bigg53@gmail.com

Assistant Ministers: Revd Paul Garnell (Pastoral Care), Revd
Howard Bigg

We are your Parish Church and we:

Worship God and follow Jesus. Come and join our Christian services and activities as listed below. You will be most welcome.

Welcome weddings, funerals, christenings and services of thanksgiving that mark the memorable milestones of life.

Contact Paul at paulgarnell@lordsbridge.org

Provide Pastoral Care. We offer home visits and other kinds of care in partnership with local groups such as the Hardwick Network. For support please contact Paul on

paulgarnell@lordsbridge.org

Serve and support each other and you. Did you know we are part of the teams who run Pippins and organised the Eco day? We hope you are familiar with and enjoy the regular Community events we host such as Summer Afternoons, the Garden Safari, Safari Suppers, Quiz nights, our fetes, festivals and activity days. Now with the Cabin up and running we want to enable many more community groups. You can join the groups that are now running from the Cabin and maybe think about starting up your own. Check out the Cabin page on our website. Please see below for details of community groups that are run by members of St Mary's and supported by the Parochial Church Council.

Worship in Church on Sunday Mornings

7 th Nov	9.30am	Service of Communion with Alex Hughes
14 th Nov	9.30am	Morning worship with Clare Bigg
21 st Nov		No service in St Mary's Hardwick: 8.30am West Cambridge Ecumenical Service in St Andrew's Church
28 th Nov Newton	9.30am	Service of Holy Communion with David

Worship on Zoom and Worship at Home on Sundays

Worship at Home, Weekly in print; including Pic N Mix, story and activities for families. Contact Clare to receive materials

Worship on Zoom, weekly at 11am. Contact Clare for the link cebigg53@gmail.com

Wild Church at St Mary's Hardwick

Next on Nov 14th at 3pm in the Cabin Garden. Engaging spiritually and creatively with the natural world. For families with primary age children from local villages, book in with

Clare cebigg53@gmail.com

Tuesday Mornings at the Cabin

10am-11.30am. Open to all under 5s and their carers who want to play, have fun and experience a bit of toddler-style church. More from Clare cebigg@gmail.com or via their Facebook page

Christian Meditation Sessions

Fortnightly; 2nd, 16th and 30th November in the Cabin at St Mary's at 12.15pm. Just come along if this sounds like something you might find helpful in these stressful times. You are welcome to ring Revd Howard Bigg on 01954 211673 for a chat or email hcbigg40@gmail.com.

'Thirst' youth worship and small groups for young people.

Next on 14th November, 6pm-8.30pm including a meal. Based at Comberton Baptist Church. More on www.wccym.org

Colour Wheel

A peaceful, companionable group to enjoy adult colouring together. Meet fortnightly in the Cabin from 1-3pm on Tuesdays. Contact Nicky kerranica@gmail.com

Bumps and Babies in the Cabin

A safe and supportive group for pregnant parents and carers of new babies up to being mobile where you can make friends and share experiences, tips and tricks. Facilitated by a midwife and antenatal teacher. Thursdays 10.30- 12.00 in the Cabin. Contact alison.marcus140@gmail.com

Cabin Creative Arts

Another fortnightly companionable group. Bring along your current project whether it be needlecraft, drawing or painting or anything else. Contact Thelma on tpwestbury@gmail.com

Christmas tree festival

Date for your diary 10th-12th December. Details are elsewhere in this edition of Hardwick Happenings.

Lunch Club. Your help is needed

Ali is looking to start a weekly community lunch club in the cabin. Please contact her if you like to help.

alison.marcus140@gmail.com

Now that Alison Myers is Warden of Launde Abbey, we are in a period of interregnum whilst a new vicar is appointed. As you can see, we will continue to do all that we usually do as we are ably led by our interim minister, Clare Bigg. We would be really grateful if you could join us in a prayer for Alison and her family and ourselves as we wait for and participate in the appointment of the next vicar of St Mary's Hardwick. If prayer is not for you, then please think of us.

A prayer for Alison and her family

God of the journey, you give us diverse gifts with which to serve your Church, and have blessed us through the ministry of Alison. As she, and her family, journey on, may your light mark their way ahead, that they might walk in the path of life. Through Jesus Christ we pray. Amen.

A prayer for whoever will join us

God of the journey, whose Spirit blows where it will. Move amongst your people, and draw to these villages and this team a new priest, who will equip us to build your kingdom. Prepare our hearts to work with them, in the service of your of Son, our Saviour. Amen.



The advertisement features a background image of a hair salon interior with a white chair and a mirror. At the top, there is a decorative flourish with a pair of scissors. The text is centered and reads: **THE HAIR SNUG**, **Unisex Hair Salon**, **175 St Neots Road**, **Hardwick**. Below this, it says **Open Tuesday – Saturday and late-night Wednesdays**. Further down, it states **To book an appointment, call - 07956 607439**. At the bottom, it says **Or message on Facebook -** followed by a Facebook icon and **@thehairsnug**. A decorative flourish with a pair of scissors is also present at the bottom of the text area.

Wallis Farmhouse

Self Catering Cottages

Six individually styled self catering cottages set in extensive gardens and grounds



01954 210347

enquiries@wallisfarmhouse.co.uk
wallisfarmhouse.co.uk

Wallis Farm, Main Street, Hardwick, CB23 7QU

We are your local Calor Gas stockists



HIGHFIELD FARM TOURING
PARK
LONG ROAD
COMBERTON
CAMBRIDGE
CB23 7DG
01223 262308





TUESDAY MORNINGS

Toddlers in the Cabin

**Play, chat, craft,
singing, bible stories
for under 5s and their carers.**

**Tuesdays in term-time 10 - 11:30 am
Restarting on Sept 7th**

**To register please email
Clare on cebigg53@gmail.com.**



Wild Church

For families to engage playfully,
actively and creatively with
God's natural world

For more details see St Mary's
website
<https://stmaryshardwick.org.uk/>

Meeting monthly on Sunday
afternoons 3-4 pm in the
garden by the Cabin at St
Mary's
Upcoming dates:
Oct 10th
Nov 14th

For more information and to book contact:
Ali Marcus: alison.marcus140@gmail.com, 07824887740
Or Clare Bigg: cebigg53@gmail.com, 01954 211673



Bumps and Babies at the Cabin

**A friendly and informal group for expectant parents
and parents/carers of babies up to the baby being
mobile.**



chat

Meet old
friends and
new



Thursdays, 10.30-12.00



Informal

Cake, fruit and
a drink.



Evidence- based Information and support in Hardwick

Contact Ali on 07824887740 or alison.marcus140@gmail.com

Saturday 30th of October

10am –4pm

A must for all book lovers

GIANT

BOOK

SALE

At the Cabin at St Mary's

**Our whole stock will be out for
the very first time and the Cabin
will be brimming with books.**

Tea and coffee available.



quattro-tech

AUDI VOLKSWAGEN SEAT SKODA

Independent specialist for all things
Audi, VW, Seat, Skoda & VW Commercial

- 🔧 VWG Servicing
- 🔧 VWG Repairs
- 🔧 VWG Diagnostics
- 🔧 VWG Performance Upgrades
- 🔧 VWG Genuine Parts



quattro-tech.co.uk



SALES 🚗 **AIR CON SERVICING** 🚗 **4 WHEEL ALIGNMENT** 🚗 **MOTs**

Unit 15A, Solspark Trading Estate, Station Road,
Pangloss, Cambridge CB22 3BB
info.cambridge@quattro-tech.co.uk 01223 999649

Unit 9C Harding Way, St Ives, Cambridgeshire, PE27 2WN
info.stives@quattro-tech.co.uk 01480 464 886

revo Authorised Dealer

[Facebook](https://www.facebook.com/quattro-tech) [Instagram](https://www.instagram.com/quattro-tech) [LinkedIn](https://www.linkedin.com/company/quattro-tech)

 **REVO CARS**

DAVID TURNER



LEGAL SERVICES



Making or Updating
your Will



Lasting Powers
of Attorney



Probate & Estate
Administration



Court of
Protection



We have been advising clients for over 30 years and pride ourselves on our friendly personal approach whilst providing an efficient and professional service.

If we can be of help, do call in to see us. If you prefer, home visits can easily be arranged.



The Commercial Centre
6a Green End, Comberton
CB23 7DY



01223 264 187



david@dtlegalservices.co.uk

Calling all budding writers
. HH needs you

This is your magazine. The editorial team usually do some topical items but otherwise the success or otherwise of each edition depends on what is sent in. Don't worry if your spelling is wayward or if you are dyslexic, we will always correct it. (We did have a spelling mistake last month, but that was because we overlooked it in the rush to meet deadlines.)

Howard and Peter

SAUNDERS LANDSCAPES

Landscape design and construction

Established for over 25 years, Saunders Landscapes offers you a variety of specialist landscaping services in and around Cambridge and the Cambridgeshire area.

Driveways and Paving • Gardens and Patios • Timber Decking • Walls and fencing

For a **free no obligation quote** or if you need advice and consultation. Whatever your requirements, contact Saunders Landscapes today.

01954 211559/ 07774 127416
www.saunderslandscapes.co.uk

CSO CONSTRUCTION LTD

NEW BUILDS < EXTENSIONS < BARN CONVERSIONS

LOFT | GARAGE CONVERSIONS < REFURBISHMENTS < KITCHENS

FLOORING < ALL ASPECTS OF CARPENTRY < GENERAL BUILDING WORKS

CSO are reputable builders in the Cambridgeshire area, being recognised for our high quality of work, reliability and commitment. We offer a wide range of services carried out by our reliable craftsmen, ensuring the clients requirements are met to an exceptionally high standard.

Connor O'Reilly – Company director
07453262100 | 01954 212644 | mail@csococonstruction.co.uk

www.csococonstruction.co.uk

Decisionsdecisions.....decisions

'Decisions' is a new feature for HH. Each edition we hope to pose a question for you to think about. If you have an answer, and that won't always be the case, please let us know.

So the second poser is this:

You are standing in a supermarket queue.

A little ahead of you is an old man with walking stick, smartly dressed and with war medals on his suit. He is discreetly shovelling items from the shelf into his inside pocket. It is clear that he has no intention of paying for them.

What should you do or say?

Would it make any difference if he didn't have the medals, or the walking stick, or if he were shabbily dressed?

What if he were younger?

MARK WEATHERHEAD LTD
A66 South House, St. Neots Road,
Hardwick, Cambs CB23 7QJ
Tel: 01851 213055
E-Mail: sales@markweatherhead.co.uk
Website: www.markweatherhead.co.uk

Mark Weatherhead



SALES **SERVICE** **PARTS**

WE ALSO HIRE OUT :- AERATOR, SCARIFIER & TURF CUTTER

COME AND VISIT OUR SHOWROOM AND COUNTRY STORE IN HARDWICK CB23 7QJ

FUNDRAISING FOR HARDWICK PRE-SCHOOL
(CHARITY NUMBER 1059361)

ENTERTAINMENT
**QUIZ
NIGHT**

Saturday 15 Jan 2022
7.15pm for 7.30pm start

Bring your own drinks for an evening of quizzing
fun with friends. Soft drinks and nibbles
also available for purchase on the night.
To be held in Hardwick School Hall.

£5 per person

Enter your team today! (Max 6 people per team)

Email hardwickpreschoolfundraising@gmail.com or
Message us on our Facebook page 'Hardwick PreSchool Events'
Payment via www.PayPal.me/hardwickpreschool or
pay cash to James Wakeling or on the door.



[Leper Chapel Open Days](#) - 1-3 pm Oct 30 & Nov 13
Your chance to see inside one of Cambridge's oldest buildings, which is not usually open to the public. Free.

[Halloween Spooktacular](#) – from 4-8pm Oct 31 at Wandlebury
Uncover the darker side of Wandlebury's history with tales from the ghostly past, dare to accept fiendish foods from our ghoulish witch and undertake our early creepy crafts. [Tickets](#)

[Dracula](#) Part 1 at the Leper Chapel – 7.30pm Nov 6 & 7
Jonathan Harker (Martin Prest) recounts his terrifying journey to Transylvania and his now immortal encounter with Count Dracula. [Tickets](#)

[Cambridge Past, Present & Future AGM](#) with guest speaker Dame Fiona Reynolds 6.45pm Nov 9 **ONLINE**
This event is free. To register for the Zoom session please book a place by entering the number of tickets [here](#)

[History, the horse and the holes in the Ground](#) – 10am-12pm Nov 10
Join the Wardens for a stroll around Wandlebury and discover some of the Iron Age and 18th Century history of this Scheduled Ancient Monument, country estate and stables. No need to book.

Oakes and Watson Tree Surgery and Consultancy And Peter Oakes and Daughter Tree Surgery



Oakes and Watson ARBORICULTURE AT ITS BEST.

At Oakes and Watson we pride ourselves
In providing professional, competent and
Complete services in all aspects of tree
Surgery and care.

We have 19 years experience in top quality
Tree care at extremely competitive prices.

Here at Oakes and Watson we believe that
Experience and qualifications come hand in
Hand so we are fully qualified, competent
and insured in the job we both love.

Due to my father semi retiring in October 2017
my husband and I have continued the business
that he set up some 25 years ago by combining
it with our own.

It is a pleasure and an honour to continue to
offer top quality tree care in and around the
area where my husband and I both grew up.



Oakes and Watson

Cert ab L2, DIP Arb L4 (ABC), TechArborA, CS Certified

Our Services

All Aspects of Tree Surgery undertaken:

- Tree Removal
- Crown Raising
- Reductions
- Cable Installation
- Pollards
- Hedge Cutting
- Topping
- Tree Planting
- Thinning
- Tree Reports/Inspections
- Fencing
- Formative pruning

Woodchips and Logs always available.

01353 968287 www.oakesandwatson.com

07885377682 arb@oakesandwatson.com

Parish Council Newsbites

Capstone Fields street names

The planners from South Cambridge District Council have informed us about the new street names for the above development of 155 new dwellings. These will be named after some residents, who sadly now have passed away, and have made genuine contribution to the Hardwick village life.

We have been advised that the street names will be:

- Howells Way
- Lofty Close
- Turner Close
- Bhachu Drive
- Barker Way

Greater Cambridge Local Plan – Consultation

The next Local Plan for Greater Cambridge is approaching Public Consultation stage. From 1st November to 13th December 2021, everyone gets the opportunity to have a voice. We know the planners' first pass is to get the growth in housing mostly from larger sites outside of Hardwick BUT that does not mean the end of the story. We have been approached by two developers whose plans for Hardwick were not included in the “first cut” but if you feel strongly one way or the other about housing or any other aspect of the Local Plan, please respond to the Consultation. For more information about the Consultation, please check: <https://www.greatercambridgeplanning.org/emerging-plans-and-guidance/greater-cambridge-local-plan/>

The Parish Council would also be very interested in any concerns you may wish to bring to us but please bear in mind we do not have the final say. We will publish more on Notice Boards, the Village Web site and Facebook group as the 1st November approaches

St Neots Road – please take care

Following last month's Parish Council snippets in Hardwick Happenings we have been asked about the plans for St Neots Road mixed use cycle path which is proposed to run the length of St Neots Road, Hardwick. We have not seen the final scheme or time schedule yet but the proposal as it stands is to have a 3 metre, possibly 4m, mixed use (shared bikes and pedestrians) along the south side of St Neots Road. In order to "fit it in" they intend to remove our Lay-bys. If you have strong views about the mixed use path or the removal of the laybys please contact the Clerk or Parish Councillors.

Meanwhile may we please suggest St Neots Road vehicle users take care when accessing roads and driveways. There are recent reports of near collisions between cyclists (wearing headphones) and vehicles at the road junctions and sadly although pedestrians have right of way, they are still likely to come off worse. Please also bear in mind, the footpath is not a cycle path - yet.

Capstone Fields development

As many will have noticed, the new development off St Neots Road is gaining pace. On 16th October, the Show Home will open and they are starting to take bookings. They anticipate the first residents may move in at the end of the year.

You will see road cleaning vehicles helping to keep the St Neots Road free of mud but please report any unacceptable dirty road conditions to the Parish Council as the developer is keen to keep it clean for the village.

Allotments in the village

There will be a small number of allotments available soon in the Meridian Fields development area. Whilst the management of these allotments is still being worked out, if there are any interested resident(s), please contact the Clerk for further information.

continued

Tree Planting and Trial meadow areas

At recent Parish meetings, proposals from the Climate Change group about planting of around 70 trees, as well as trialing meadow areas in certain parts of the village, on Parish land, were approved. The Council would like to thank the Climate Change group for its commitment towards better climate change mitigation in the village.

More information can be found in the meetings minutes papers, available on the village website.

If you have any queries on any of the above, as usual, please contact the Parish Clerk (clerk@hardwick-cambs.org.uk)

On behalf of the HPC Communications Working Group

BASS SINGER WANTED

A small, Comberton-based choir is looking for a bass to join them at Monday evening rehearsals. We are a friendly and supportive group who sing mainly for our own pleasure and that of family and friends.

Our Programme is varied and runs from Madrigals to musicals and modern music.

If you are interested in joining us, please contact

our conductor on

01223-262407.

**Sunday services
at Hardwick School
at 10.30am**

SUNDAY MORNING SERVICE, 10.30AM, HARDWICK SCHOOL HALL

Sun. 7November: Service with Young Church & Communion

Sun. 14November: Service with Young Church

[Sun. 21November: Joint Service at Comberton Leisure, 10.30am]

Sun. 28November: Service with Young Church

We meet to praise God, listen to a talk and pray together. Part way through, the children go to **Young Church**. The service is informal, and we sing a mix of modern and older songs. The service usually ends at noon, followed by refreshments.

Young Church is for children from babies to Year 6. We join the grown-ups in the School hall then go to the Community Room for Bible teaching, singing & activities.

Young People of secondary school age usually have their own group.

Midweek activities

Home groups - We have evening midweek groups that meet in people's homes, for fellowship, Bible Study and prayer.

Prayer meeting - First Thursday of the month.

If you want a visit, want someone to talk to about God, about life, about feeling stressed or alone, please get in touch with us.

Minister: Kate Gaze 07474 866966

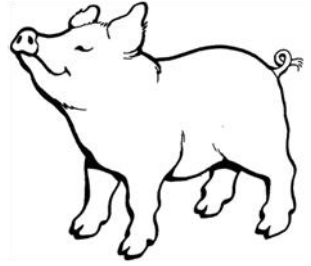
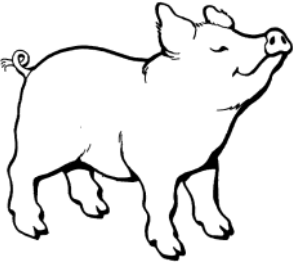
minister.hechurch@gmail.com

Pauline Blower 01223 262525

pastoral.hechurch@gmail.com

Website - www.hechurch.co.uk

Find us on YouTube and Facebook.



This month I'm reading a book entitled 'The Marvelous Pigness of Pigs', by Joel Salatin, a Christian farmer in the US (hence the spelling 'marvelous') who is committed to regenerative farming. The principle underlying regenerative farming is that the world's resources have been so depleted that *sustainable* farming is no longer adequate: we need to *regenerate* the land, to leave it in a better state than it is in currently.

Although the book is somewhat of a rant, there are gems to be found. The importance of belief leading to action is a thread throughout, or, as James puts it in his letter in the New Testament, 'I'll show you my faith by what I do'. Specifically for Salatin, the question is how can we say we love God (the Creator) if we do not value the things he has made (the world)? And how can we say we value the things God has made if we continue to exploit the world and its resources?

As I ponder the questions above, I am reminded that the Bible tells us God prescribes regular periods of rest for people, for livestock and for the land. In fact, the Bible is littered with instruction about how to care for the world in a God-honouring way, a way that also honours the land, each other and animals. I'm also reminded that God so loved the world that he set about redeeming humankind: perhaps redemption is about more than individual salvation...

Kate Gaze

ardwick
vangeli
nurch

JOIN US



NOVEMBER DROP-IN

 An opportunity to get together,
have a drink and a chat.

 **Mon 1st, 15th & 29th, 10am - midday**
Weds 10th & 24th, 1.30-3.30pm

 **Hardwick Evangelical Church**
The Living Room,
St Neots Road (near the hairdresser)

www.hechurch.co.uk

In need of a chat? Fancy a bit of company over a coffee? Check out the dates above for an opportunity to join with others at our November drop ins. A place where it's OK to not be OK, a place of good company and good conversation.

All welcome!

JASON KIRBY

Professional Painting
& Decorating Ltd

A Professional Service
from Start to Finish

Tel: 01954 211775
www.jasonkirbyltd.co.uk



DOG
GROOMING BY
JODIE ARTHURS

BATHING - GROOMING - STYLING
CLAW CLIPPING - HAND STRIPPING
CLIPPING - ONE TO ONE GROOMING
AND A UNIQUE PUPPY PLAN 

07522562279

doggroomingbyjodiearthurs@outlook.com

7 GREENSIDE CLOSE, SWAVESEY, CB24 4RF

Rothwell's

Carpet & Stone Floor Cleaning

Carpet Cleaning & Stone Floor, Upholstery, Rugs

*A few points that make us stand
out,*

Rothwell's has been in business
since 1993

We're an honest local family firm.
Our large truck mounted machines
mean more cleaning & drying power
for the best results possible.

Members of both the NCCA and
TACCA.

We will move the furniture.
100% satisfaction or it's FREE.
Call *Oliver and Max Campbell*
for expert help today.

01223 832 928
www.Rothwells.biz

Spotless Dog

327 St Neots Rd, Hardwick CB23 7QL

Bathing
Grooming
Clipping
Hand stripping
Styling.

Prices from only £20

tel: 07719 575000

www.spotless-dog.co.uk



Hardwick Walk for Health

Hardwick Walk for Health group is doing a sterling job of getting the village out on twice-monthly walks.

First Friday of the month - meet at Blue Lion pub for a 11am start. This walk tends to cross the fields so wear strong shoes. We normally end up at the pub for a tea or coffee, sometimes something stronger and sometimes for a whole lunch.

Third Friday of the month - meet at Frankie's Snack Bar for an 11am start. Again if we are lucky with the weather we will head out to the fields. If not, then a tarmac walk.

Each walk lasts around 45 minutes or so, and with plenty of volunteers you can take it at your own pace, and be sure of some company along the way. We have had people new to the village, and people who have lived here for years. We have had people join us for just a bit, due to a recent op, and we have people striding out ahead to get in as many steps as they can. The walkers find their own pace, and we arrive back at the start point for a catch up and a drink.

Come rain or shine, a volunteer will be there, so the walk will go ahead regardless of the weather.

Do join us!

Sharon McMahon

Hardwick Christmas Tree Festival
Hosted by
St Mary's Church



Friday 10th & Saturday 11th
December, 2021

3pm – 5pm

£2 for adults, children free

Refreshments available

Christmas Concert with carols
on Sunday 12th December 4pm – 5pm
with Eversden Brass Band (we hope)

Refreshments available

Proceeds in aid of St Mary's Church Fabric
Fund and Wintercomfort

Local, Cost Effective Kitchen Fitting, Carpentry & Building Services

Kitchen installations

- Bathrooms and Bedrooms fitted
- Laminate/Engineered Wood
- Flooring
- Built-in and Fitted Wardrobes
- Cupboards built to your specification
- Property renovation
- Carpentry and Joinery work



Customer Testimonial:

“The work was performed on time and to a high standard. We are very happy with the results”

*Contact Martin or Paul on
cambourne.improvements@gmail.com for a free quotation
or Tel: 07785 551224*



Consultations by Appointment Only

In an emergency please telephone ahead

HARDWICK

169 St Neots Road, Hardwick
Cambridgeshire, CB23 7QJ

Tel: 01954 210250

PAPWORTH

Pendrill Court, Ermine Street North
Papworth Everard, Cambridgeshire, CB23 3UY

Tel: 01480 831615

www.ashcroftvet.co.uk

Out of Hours Tel: 0845 500 4247

Hardwick Community Centre Building Update October 2021.

Dear Hardwick Resident,

It seems quite a while since we have been able to update you with the progress of the proposed Community Centre building. The Hardwick Community Centre Working Group (HCCWG) has been making progress with our architect and has received informal pre-planning application feedback on the project from planning officers. This has enabled us to look in more detail at certain aspects of the plans so that we can submit a formal planning application to South Cambs District Council which is more likely to get approval first time.

We are now at the stage of collecting data required by the feedback to add to our planning application. This data includes:

An ecology report regarding wildlife in the area.

A tree report, to include any tree protection issues.

A context, design and external spaces update, to ensure local landscaping and character of the area is maintained.

A highway safety and car and cycle parking report, to ensure we have considered sufficient parking for all types of activities at the centre.

All of these areas, and a few similar ones, will now be professionally assessed for the working group and added to our application. Some had already been assessed but not in sufficient detail. Notwithstanding those areas needing more detail the project plans and general location on the recreation ground were generally well received by the planning officer.

The areas above are quite common requests at this stage of an application and should be concluded within the next six weeks, so we hope to go to a formal planning application by the end of November 2021.

The good news is there were no queries regarding the building itself. In the conclusion to the feedback report it stated, "overall the proposed building is well designed and would appear in keeping with the character of the area and it would have limited impact on neighbour residential amenity."

We now have a busy six weeks to get these professional reports completed and seek further comments from local residents before submitting our planning application.

Residents will have the right to comment to the District Council on the planning application once submitted but HCCWG hopes that its continuing dialogue with nearby residents and the village as a whole will help to resolve as many issues as possible beforehand.

If you have any comments regarding our progress please email the HCCWG on alan.west10@btinternet.com



Since the last magazine article the Guides and Rangers have had a few meetings in the Scout and Guide Hut, catching up on outstanding parts of the programme.

We also had a visit from our County archivist who brought some old uniforms for the Guides to see and

try on if they wanted to. The Guides and Rangers also found out about the Guide International Service which was an organisation set up by the Girl Guides Association in the UK in 1942 with the aim of sending teams of adult Girl Guides to Europe after WW2. The teams were drawn from Britain, Australia, Canada, Ireland and Kenya. These teams were sent to Greece, Germany, Malaya, The Netherlands and Bergen Belsen camp.

After half term we'll start doing our Christmassy activities, which we'll tell you about in our next article.

For more information about Guides or Rangers please see below. To be put on the Guide or Ranger waiting list, please either email us or go to the Girlguiding website and follow the 'Join Us' link.

Guides are aged 10 - 14 years old, and Rangers are aged 14 - 18 years old.

If you would like to know more about Guides or Rangers (or are younger and would like your name to go on our joining list) please get either email hardwickguides@gmail.com

go to the Girlguiding website and follow the 'Join Us' link.

If you would like details of the Rainbow (5 - 7 years) or Brownie unit (7 - 10 years) do get in touch as we can point you in the right direction.



Filtering water with various things

Janet Hayman and Kirsty Orange Guide and Ranger leaders

B. VINCENT

ROOFING SERVICES LTD

OVER 30 YEARS EXPERIENCE IN THE LOCAL
ROOFING INDUSTRY

Our extensive range of high quality workmanship includes
the following:

Re-Roofing (including listed & period properties)
New-Build, Extensions, Leadwork, Roof, Chimney
and Timber Repairs
High Performance Felt and Single-ply Membranes
Flat Roof Systems

ALSO:

Brighten up the exterior of your home. Renew rotten fascias etc with
U.P.V.C, maintenance free, fascias and gutter systems.

For a free quotation, or advice, contact Barry on:

Office: 01954 211068, Mobile 07765440614

HARDWICK PRE-SCHOOL



**YOUR LOCAL
OUTSTANDING
PRE-SCHOOL**



Purpose-built
building in the
grounds of
Hardwick School

High level of care
and attention from
highly qualified staff



Names taken for
the waiting list
from age one

01954 212823

hardwick.preschool@yahoo.co.uk
www.hardwick-preschool.btck.co.uk



JOHN WILDERSPIN



**VAT
PAYROLL
TAX RETURNS
BOOK-KEEPING
BUSINESS ACCOUNTS**


**27 WORCESTER AVENUE
HARDWICK,CAMBRIDGE. CB23 7XG**

Tel/Fax (01954) 210975

Mobile: 07767 687652

Email: tax@johnwilderspin.co.uk


Web: www.johnwilderspin.co.uk



CAMBOURNE
VEHICLE SERVICES
The Drift, Bourn, Cambridge CB23 2TB
Tel: 01954 719039 Fax: 01954 718514
www.cambournevehicleservices.co.uk Email: info@cambournevehicleservices.co.uk

- * SERVICING FOR ALL MAKES
- * M.O.T's (UP TO 3.5 TONNES) CLASS 4/5/7
- * EXHAUST SYSTEMS SUPPLIED AND FITTED
- * TYRE SERVICE - SUPPLIED AND FITTED
- * AIR CON RE GAS & SERVICING
- * COURTESY VEHICLE AVAILABLE (BY PRIOR ARRANGEMENT)

ALL VEHICLE WORK UNDERTAKEN



FREE collection and delivery
Quality Vehicle maintenance adjusted to suit your pocket
Free collection and delivery in the local area only

**NOEL HART
GLASS & GLAZING**

YOUR LOCAL GLASS & GLAZING SERVICE

*Misted sealed units replaced
Broken hinges and handles repaired
Cat flaps fitted
Doors and windows adjusted.*

*Help with bills & reduce condensation,
Upgrade your existing glass units
To energy rated units.*

*Fast & friendly service.
Free, no obligation quotation.
No job too small.
07966 052240
01954 211177*

puttyhead3@hotmail.com

**FRESH
LOOK**



QUALITY PAINTERS AND DECORATORS
LOCAL & FRIENDLY
NO OBLIGATION FREE QUOTATION

★★★★★

07825993726 fldecorators@gmail.com fldecorators.co.uk

"Very professional service. Clean, tidy, punctual, quick and well priced. I would definitely recommend and use again myself" 5 star Google review



Interested in joining the Gym? Sign for Comberton Sports & Arts 'Great Value Gym Memberships!'

Memberships include: (NO CONTRACTS) - No Joining Fee - Easy to join!

- Fitness Suite & Free Weights access
- Excellent Studio Timetable Classes
- Free Badminton Court Hire
- Free Induction and advice from friendly qualified gym instructors

COVID SAFE ENVIRONMENT
NO JOINING FEE
COME DOWN AND TAKE A LOOK!

Standard Rate: £30 per month (DD) or £300 per annum

Concession Rate: £20 per month (DD) or £200 per annum

- Students , Over 60s, NHS , Armed Forces, Cam Academy Trust employees, GP Referrals



Give it try before you buy : Non-members welcome!

- Fitness Suite & Free Weights - Pay & Play: £6.50 or £5 per concession
- Studio Classes : £5 per class or block card (Buy 12 for the price of 10)
- Badminton court hire : £10 per court per hour

Website : www.combertonsa.org or Please call : 01223 264444

EVE CONSTRUCTION LTD

Experienced professional local builder



Extensions, garden rooms, home office, alterations, structural work, carpentry, block drives, landscaping, and all types of general building work

Contact Mark

07889 669138 | 01223 264909 | enquiries@eveconstruction.co.uk

www.eveconstruction.co.uk

WWS PLUMBING & HEATING

- FULL HEATING INSTALLATION
- BOILER SERVICES
- PLUMBING & HEATING REPAIRS
- BATHROOM INSTALLATION

RELIABLE & FRIENDLY SERVICE ■ ALL WORK UNDERTAKEN

CALL FOR A FREE QUOTE

01954 212134 / 07834 562532



MOBILITY EQUIPMENT

SCOOTERS, WHEELCHAIRS, RISER/RECLINER
CHAIRS, BEDS, WALKERS, FOOTWEAR, TOILET &
BATHING AIDS, KITCHEN & HOUSEHOLD AIDS, CON-
TINENCE CARE, CUSHIONS, STAIRLIFTS AND MUCH
MORE

HOME VISITS AVAILABLE
EQUIPMENT HIRE, SERVICING AND REPAIR
FRIENDLY AND CONSIDERATE SERVICE GUARANTEED



Scotsdales Garden Centre,
Horningsea, Cambridge
CB25 9JG
Tel: 01223 863908
www.orchard-mobility.com



CAMBOURNE OSTEOPATHS

Back Pain Muscle Spasm
Neck Pain Sports Injuries
Joint Pain Arthritis
Headaches & much more



In Pain? Let us help.

We are committed to giving an honest opinion,
effective treatment and good advice.

01223 598558

Book online: www.cambourneosteopaths.com

Email: practice@cambourneosteopaths.com

Appointments Mon-Fri

Regus, 1010 Cambourne

Business Park, CB23 6DP

Advertise your business in the Hardwick Happenings from £80 a year



Eight issues a year
delivered free to every
house in Hardwick

FULL COLOUR



Quarter page £80
Half page £160
Full page (A5) £320

For further information please contact Roger
Email: HardwickHappeningsADS@gmail.com
Tel: 01954 211218 mob 07580704750

Group/Org	Venue	Day	Time	Contact	Other details
Pilates	Cabin at St Mary's	Mon	10.45am – 11.45am	Lauren Daynes Lauren.daynes@aol.co.uk	
Rainbows & Brownies	Cabin at St Mary's	Mon	5.30pm – 6.45pm	Michelle Teague lhardwickrainbows@gmail.com	Girls 5 - 10 yrs
Scouts	Scout & Guide Hut	Mon	7pm – 9pm	Paul Woodridge Tel:01954 210711 Razz.scouts@gmail.com	Boys & girls 10.6 – 14 yrs
Jazzercise	Cambourne	Mon		Gary Reilly-Lloyd Tel:07886 685655 jazzerciseCambourne@gmail.com	Age 16+ any gender
Tuesday Mornings at St Mary's	Cabin at St Mary's	Tues	9.30am – 11am	Clare Bigg cebigg53@gmail.com	For parents, carers & their under 5s
Colour Wheel	Cabin at St Mary's	Tues	2pm – 4pm	Nicky Kerr kerranica@gmail.com	Alternate weeks
Guides	Scout & Guide Hut	Tues	6.30pm–8.30pm	Janet Hayman & Kirsty Orange hardwickguides@gmail.com	Girls 10 - 15 yrs
Hardwick Parish Council	HSSC	Tues	7pm – 9.30pm	Gail Stoehr, Clerk to the Council hardwickpc@jgs-services.co.uk 01954 210241	4 th Tues in the month
Explorers	Scout & Guide Hut	Wed	7.30pm – 9.30pm	Paul Woodridge Tel:01954 210711 Razz.scouts@gmail.com	Boys & girls 14 – 18 yrs
W.I.	Zoom	Wed	7.30pm – 10pm	Carolyn Purser cangpurser@btinternet.com	3 rd Wed in the month
Mums & Babes	Cabin at St Mary's	Thurs	10.30am - midday	Ali Marcus Alison.marcus140@gmail.com	
Baby & Toddler Group	Hardwick School	Thurs	10.30am - midday	Rachel Huisman rachel@huisman.co.uk	Starting in September
Cabin Creative Arts	Cabin at St Mary's	Thurs	2pm – 4pm	Thelma Westbury tpwestbury@gmail.com	Alternate weeks

Friendship Club	HSSC	1hrs	2pm – 5pm	Joan Segrave Rajo67@hotmail.co.uk	Adults over 50
Cubs	Scout & Guide Hut	Thurs	6.15pm – 7.45pm	Paul Woodridge Tel:01954 210711 Razz.scouts@gmail.com	Boys & girls 8 – 10.6 yrs
Zumba	Cabin at St Mary's	Fri	9.30am – 10.30am	Lauren Daynes Lauren.daynes@aol.co.uk	
Pilates	Cabin at St Mary's	Fri	10.45am – 11.45am	Lauren Daynes Lauren.daynes@aol.co.uk	
Beavers	Scout & Guide Hut	Fri	5pm – 6pm	Paul Woodridge 01954 210711 Razz.scouts@gmail.com	Boys & girls 6 - 8 years
Pippin's Community Café	Hardwick School	Sat	10am - midday	Anne Jones jeffandanne23@gmail.com	1 st Sat in the month
St Mary's Church	St Mary's Church	Sun	9.30am-10.30am	Rev Alison Myers alisonmyers@lordsbridge.org	
Evangelical Church	On line	Sun	10.30am	Rev Kate Gaze Minister.hechurch@gmail.com	hechurch.co.uk
Hardwick & Caldecote Cricket Club	Caldecote Recreation Ground			Chris Fuller Tel: 07557 388229 chris55fuller@gmail.com	Adults & children over 5
Hardwick Football Club				Kris Edwards hardwickfc@gmail.com	
Hardwick Pre-School	Hardwick School	Mon-Fri	9.15am-3.15pm (Term time)	Sharon Griffiths hardwick.preschool@yahoo.co.uk Tel: 01954 212823	http://www.hardwick-preschool.btck.co.uk
3.15 Club	Hardwick School	Mon-Fri	3.15pm – 6pm (Term time)	Sharon Turner hardwick3.15club@hotmail.co.uk	
Neighbourhood Watch	Hardwick School			Ashley Shepherd ahshepherd@hotmail.com	

Nisa Local 99 Cambridge Rd



Opening Hours

Friday	6.00 - 20.00
Saturday	6.00 - 19.30
Sunday	7.00 - 18.00
Monday	6.00 - 20.00
Tuesday	6.00 - 20.00
Wednesday	6.00 - 20.00
Thursday	6.00 - 20.00



01954 210437

Co-op food now
sold in store*



Coffee 2 Go



Delivery Services



Food 2 Go



Greeting Cards



Health Lottery



Home Deliveries

Hardwick Stores
07764 337168

We care about our community